

RECOMMENDATION TO ADOPT ALDERMANIC DISTRICTS WITHOUT CHANGE

Peter A. Morrison
Peter A. Morrison & Associates, Inc.

January 23, 2023

I recommend that the City of Waterbury consider readopting the current Aldermanic districts now in use without change. My rationale for this recommendation is simple: There is no *necessary* need to modify any existing district boundary. The current plan remains lawful, based upon the latest decennial census of 2020. Moreover, the current plan has functioned as intended to assure Latino and Black eligible voters the opportunity to elect candidates of choice in four successive elections to date.

Details:

1. **The population of every district is “substantially equal”.** The current Plan, as enacted in 2015, registered a TDI (total deviation from ideal) of +9.86%, based upon the 2010 census population count and 2010 block geography. The same plan, using the 2020 census population count and block geography, now registers a TDI of 9.2 (i.e., slightly better).
2. **The current Plan preserves the existing alignment of district boundaries with the City’s neighborhoods.**
3. **The current Plan maintains Latino voters’ & Black voters’ ability to elect candidates of choice in Districts #2 and #5**
4. **The current Plan will afford continuity for all voters and constituents, by assuring that every person will be situated in the Aldermanic district in which that person now resides.**

Summary:

A powerful case can be made to continue using the existing Aldermanic Districts without change. The 2020 demographic profile alone confirms that the two districts (D2 and D5), drawn originally for the purpose of concentrating Latino and Black eligible voters, have performed as intended. Together, these two districts have produced both Latino winners and Black winners among candidates competing in contested races for Alderman seats. The record to date demonstrates conclusively that the plan now in use affords coalitions of Latinos and Blacks the opportunity to elect candidates of choice.

Recommended “No-Change” Plan

With updated 2020 demographic profile

Peter A. Morrison

**Presentation to District Reapportionment
Commission, City of Waterbury, CT**

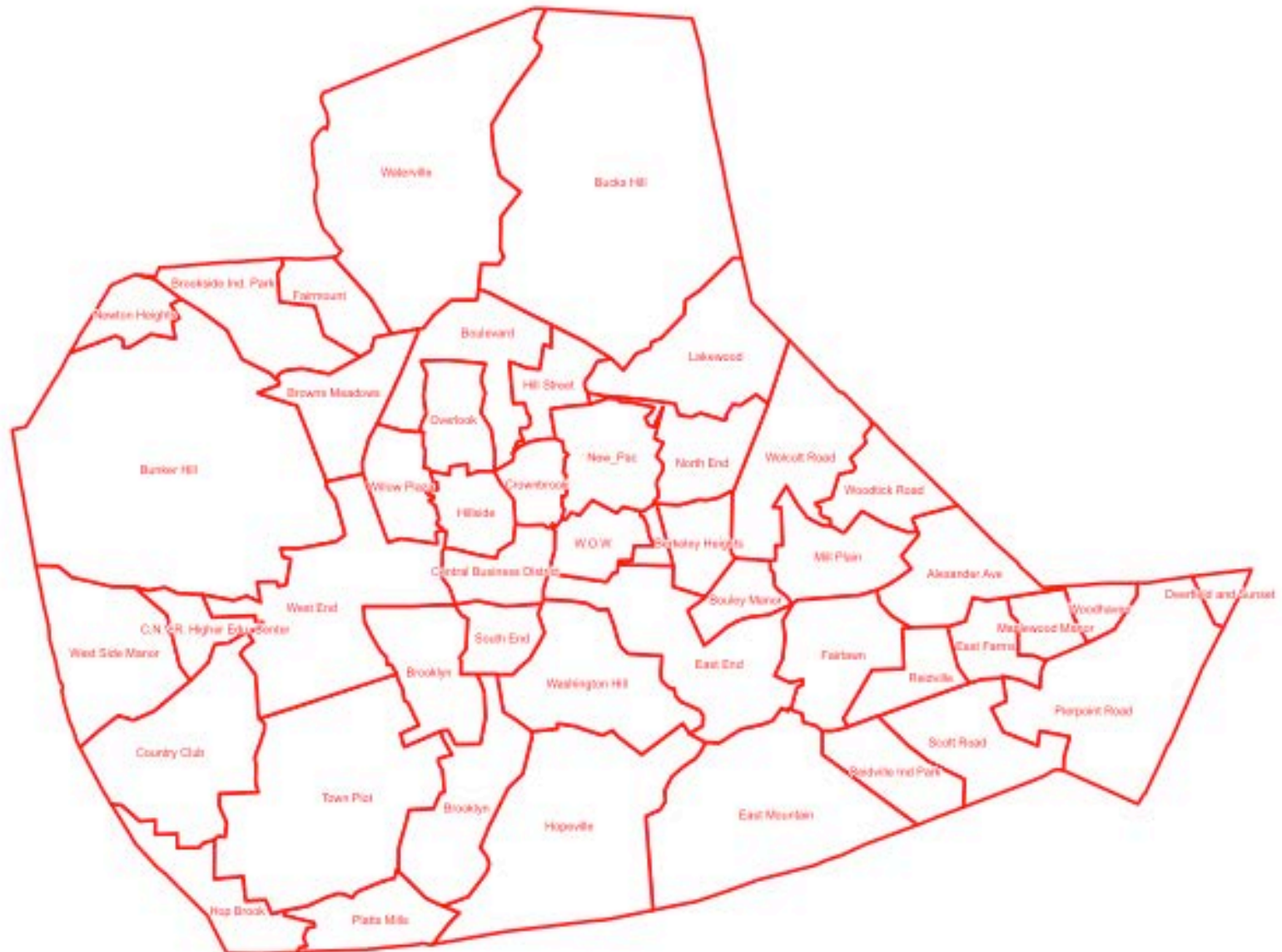
January 25, 2023

Contact: petermorrison@me.com - (310) 266-9580

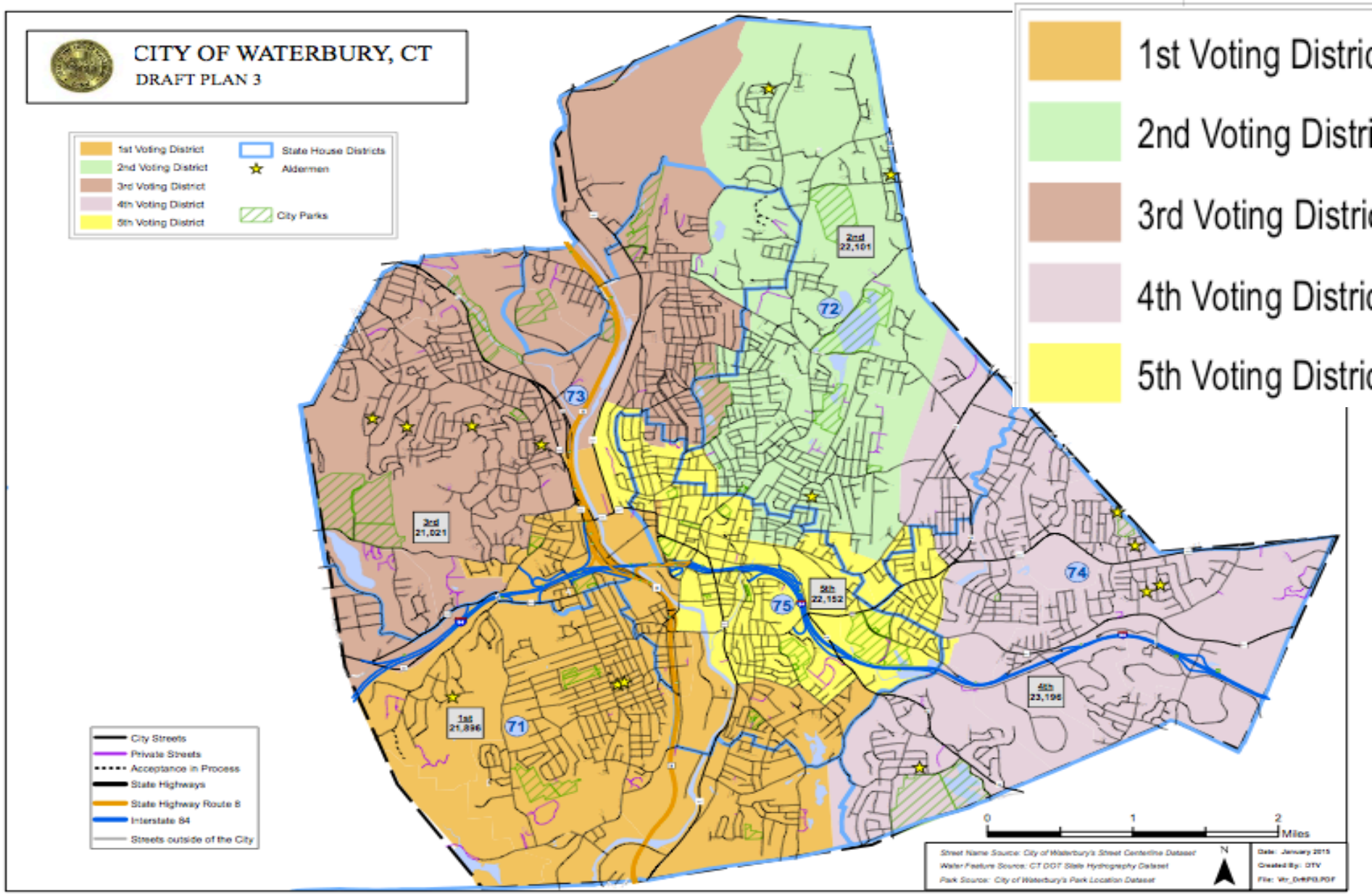
Basis for Recommendation

- 1. Preserves existing alignment of district boundaries with City neighborhoods**
- 2. Maintains Latino voters' & Black voters' "ability to elect" in Districts #2 and #5**
- 3. The population of every district is "substantially equal" (T. D. I. = 9.2%)**
- 4. "No change" affords continuity for voters**

1. Neighborhoods (Census geography)



Alignment with Neighborhoods



2. Minority Voters “Ability to Elect”

District 2	District 5
Black winners: 7 of all 12	Black winners: 1 (maybe 2) of all 12
Hispanic winners: 4 of all 12	Hispanic winners: 5 of all 12
Notes: “Black” identified by actual photo; “Hispanic” identified using Census Bureau’s List of Spanish Surnames.	

3. Districts Have “Substantially Equal” Population

***Total Deviation from Ideal
(population of all ages)***

95%:	21,737	95.4%
-------------	---------------	--------------

Ideal	22,881	
--------------	---------------	--

105%:	24,025	104.6%
--------------	---------------	---------------

<i>T.D.I. =</i>	9.2%
------------------------	-------------

Recommended “No Change” Plan

Summary Demographic Parameters:

Aldermanic Districts Now in Use: Updated 2020 Demographic Profile

District	Persons Ages 18+	White Alone	Black Alone	American Indian Alone	Asian Alone	Native Hawaiian Alone	Other Alone	Multi racial	Hispanic	% Hispanic	% Black Alone
1	17,813	8,886	2,538	60	386	4	321	752	4,866	27.3%	14.2%
2	17,106	3,765	4,656	55	214	4	242	562	7,608	44.5%	27.2%
3	16,188	7,646	2,870	47	285	6	203	576	4,555	28.1%	17.7%
4	18,266	8,594	3,281	43	529	6	212	674	4,927	27.0%	18.0%
5	16,683	3,715	3,454	43	357	7	290	469	8,348	50.0%	20.7%
Total	86,056	32,606	16,799	248	1,771	27	1,268	3,033	30,304	35.2%	19.5%

Source: 2020 Census, PL94-171 file. Data subject to change upon final verification. Note: For accounting purposes only, two 2020 census blocks are assigned wholly to D3 to correct for non-congruent geography: 090093518003010 and 90093518003011.

Key Demographic Parameters Enable Racial-Ethnic Coalitions

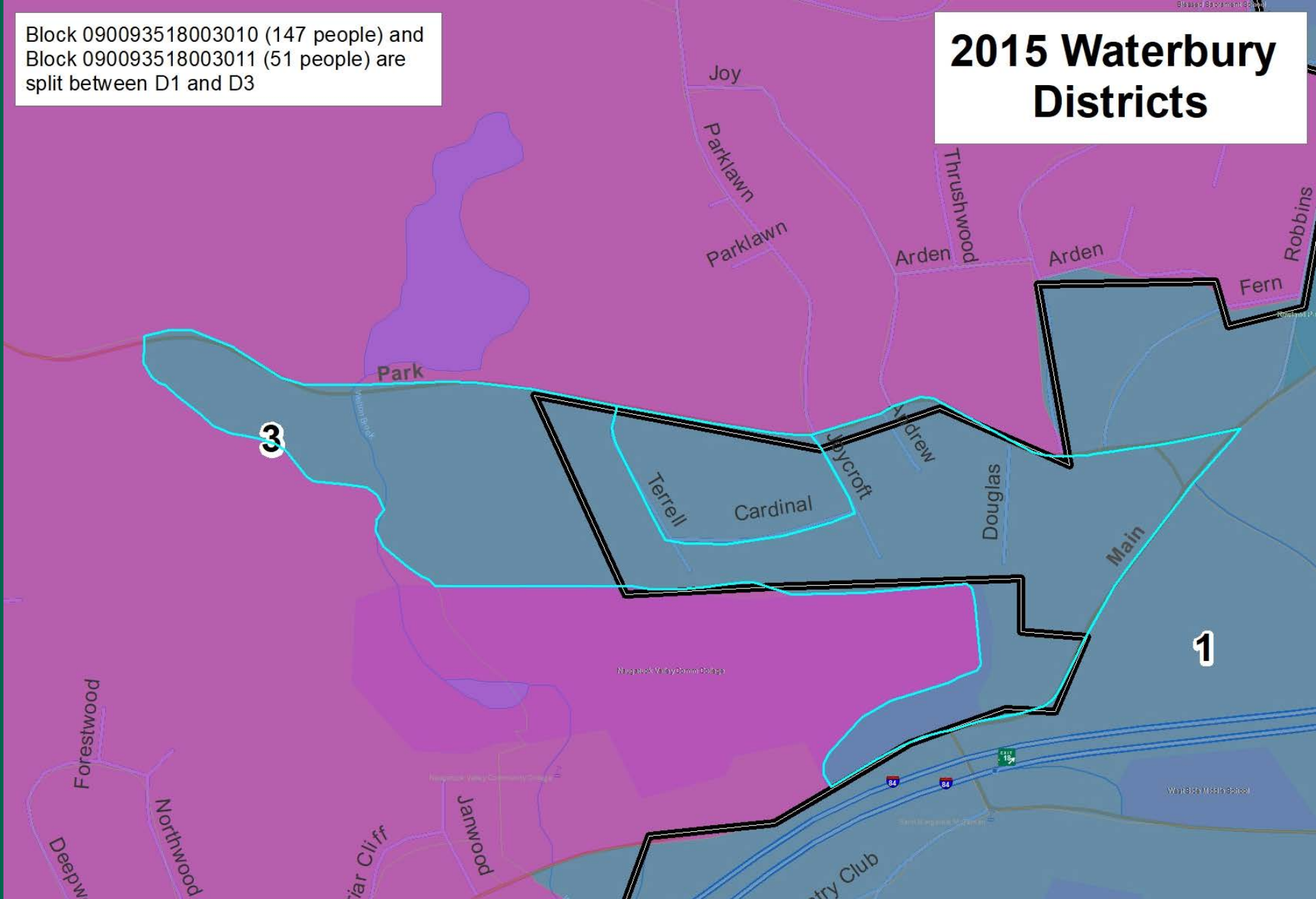
District	Persons Ages 18+	% <i>Hispanic</i>	% <i>Black Alone</i>
1	17,813	27.3%	14.2%
2	17,106	44.5%	27.2%
3	16,188	28.1%	17.7%
4	18,266	27.0%	18.0%
5	16,683	50.0%	20.7%
Total	86,056	35.2%	19.5%

Basis for Recommendation

1. Preserves existing alignment of district boundaries with City neighborhoods
2. Maintains Latino voters' & Black voters' "ability to elect" in Districts #2 and #5
3. The population of every district is "substantially equal" (T. D. I. = 9.2%)
4. **"No change" offers continuity for voters**

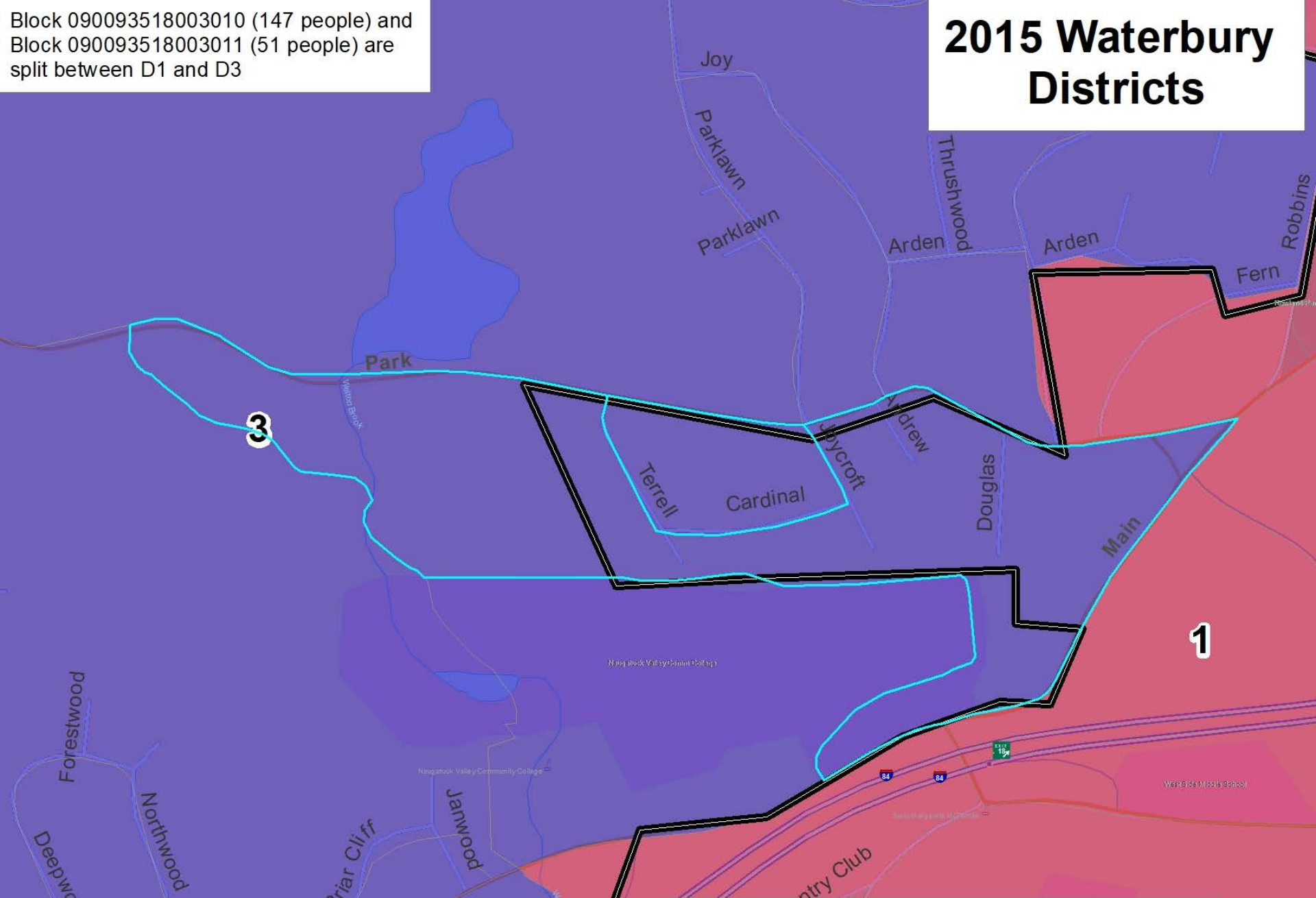
Block 090093518003010 (147 people) and
Block 090093518003011 (51 people) are
split between D1 and D3

2015 Waterbury Districts

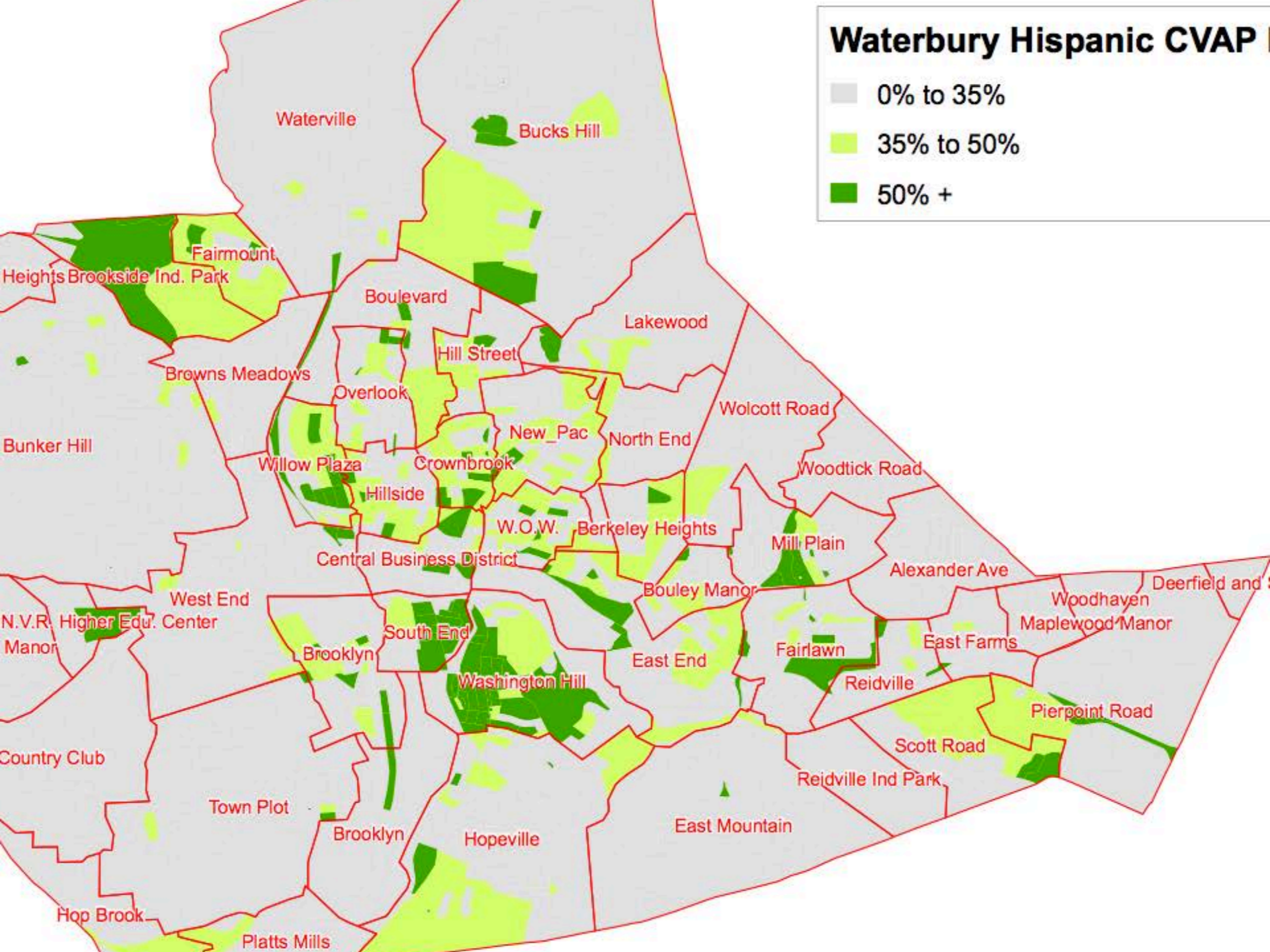
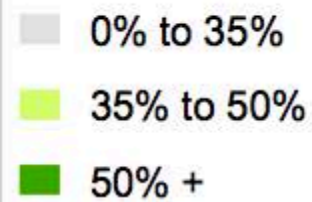


Block 090093518003010 (147 people) and
Block 090093518003011 (51 people) are
split between D1 and D3

2015 Waterbury Districts

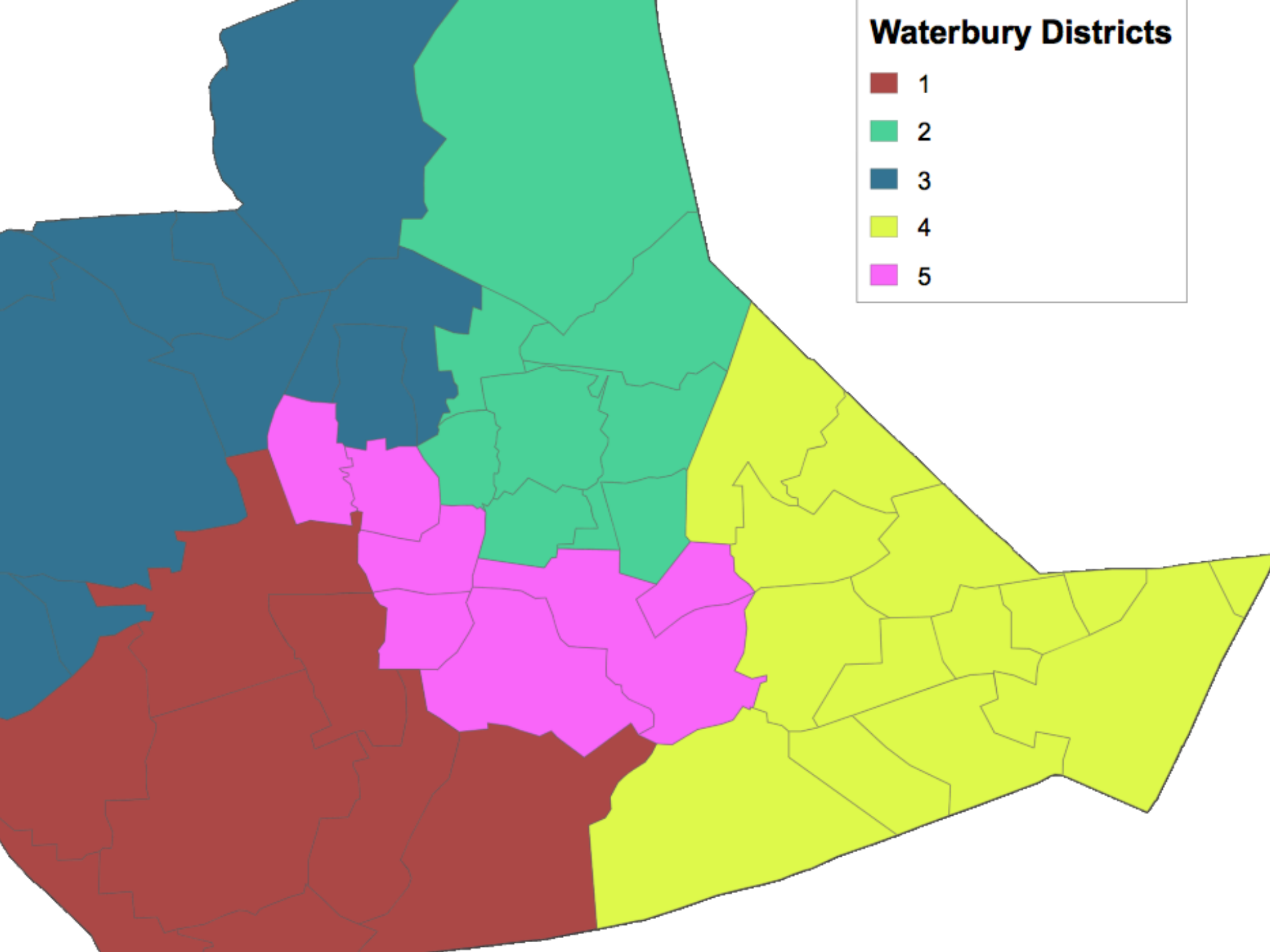


Waterbury Hispanic CVAP

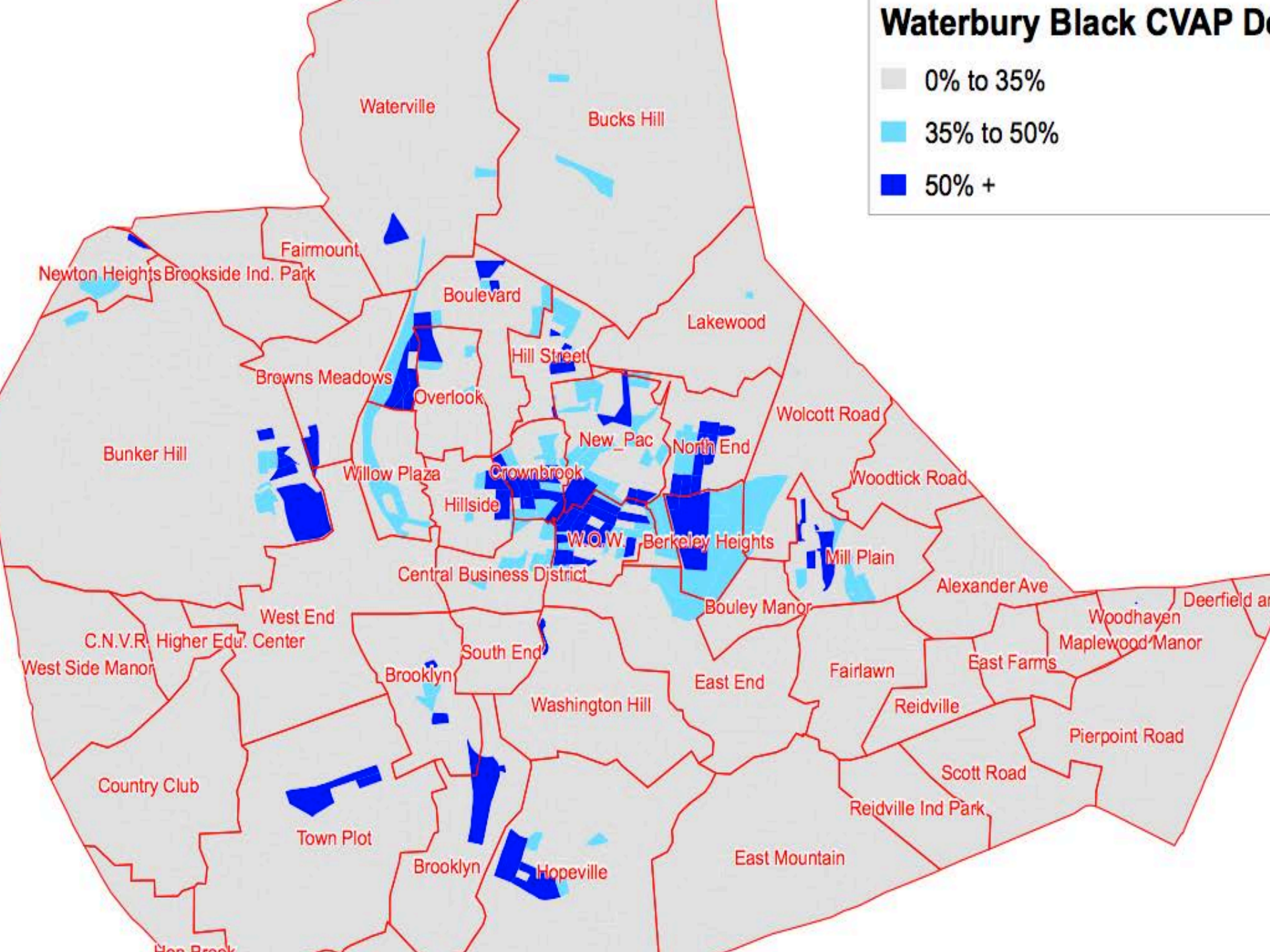
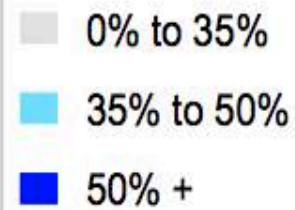


Waterbury Districts

- 1
- 2
- 3
- 4
- 5



Waterbury Black CVAP Data



Questions?