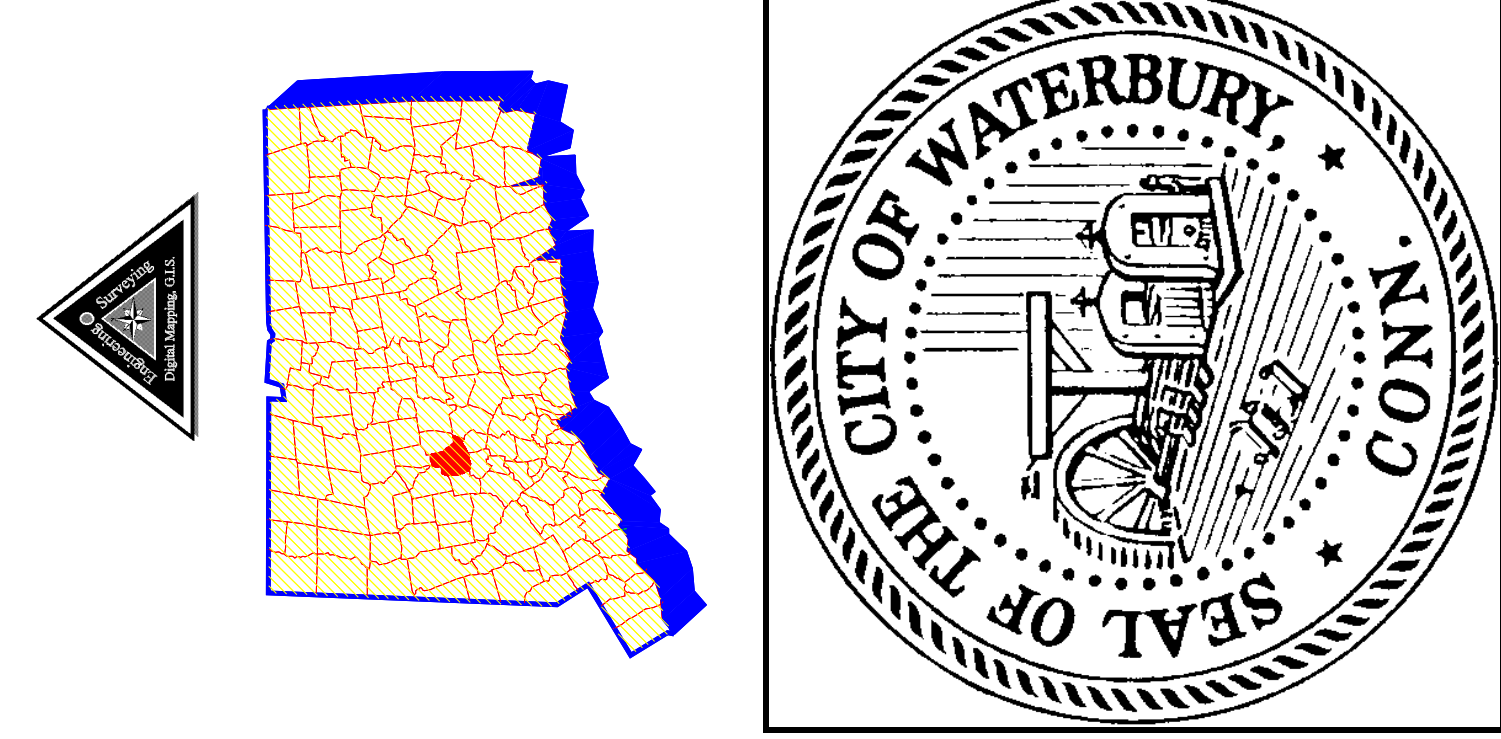


Geographic Information Systems Division Waterbury, Ct.

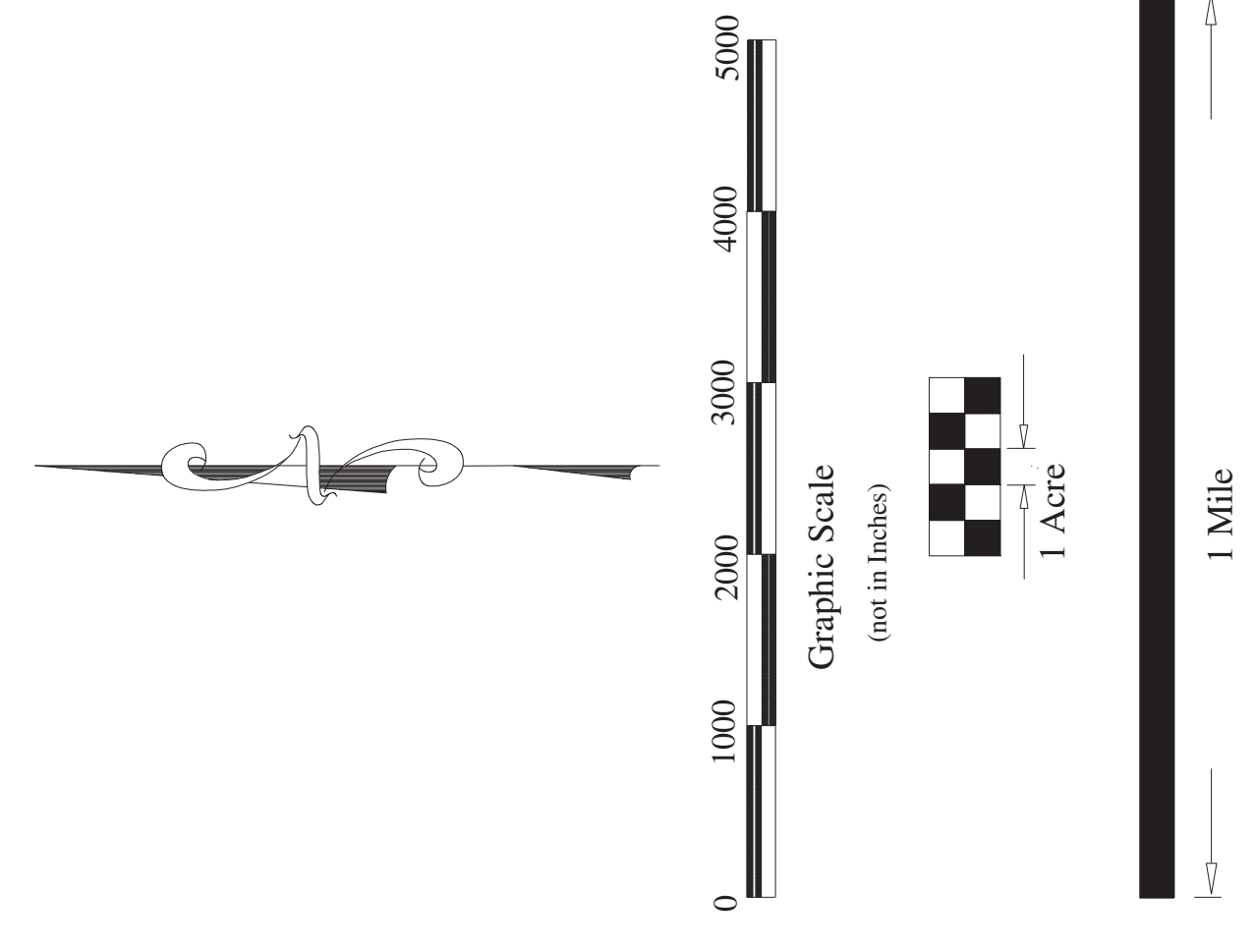
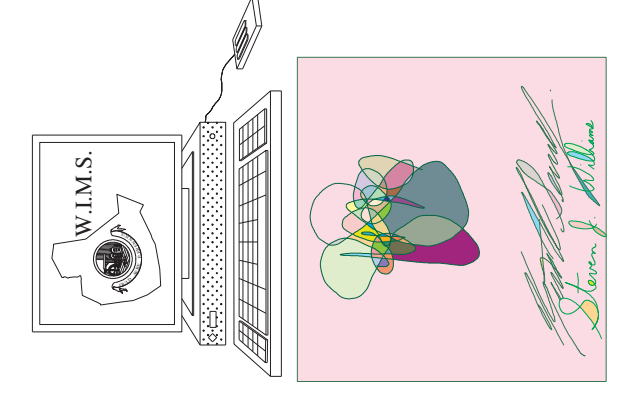
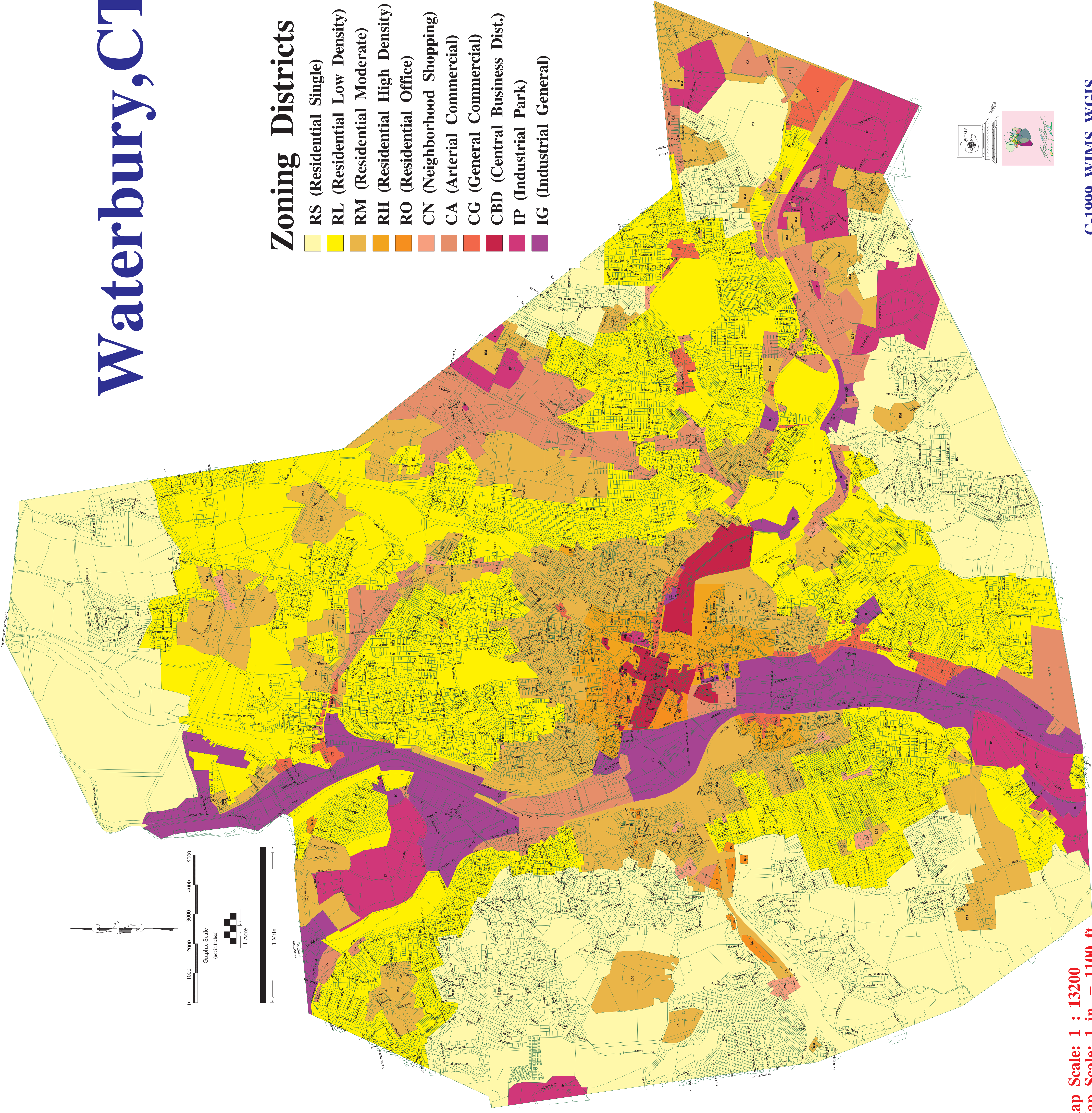


03/03/99

Waterbury, CT

Zoning Districts

- RS (Residential Single)
- RL (Residential Low Density)
- RM (Residential Moderate)
- RH (Residential High Density)
- RO (Residential Office)
- CN (Neighborhood Shopping)
- CA (Arterial Commercial)
- CG (General Commercial)
- CBD (Central Business Dist.)
- IP (Industrial Park)
- IG (Industrial General)



Map Scale: 1 : 13200
Map Scale: 1 in. = 1100 ft.

C-1999 WIMS WGIS