

# Waterbury, Connecticut 2006 Landuse Survey

www.WaterburyCT.org

203-574-6851

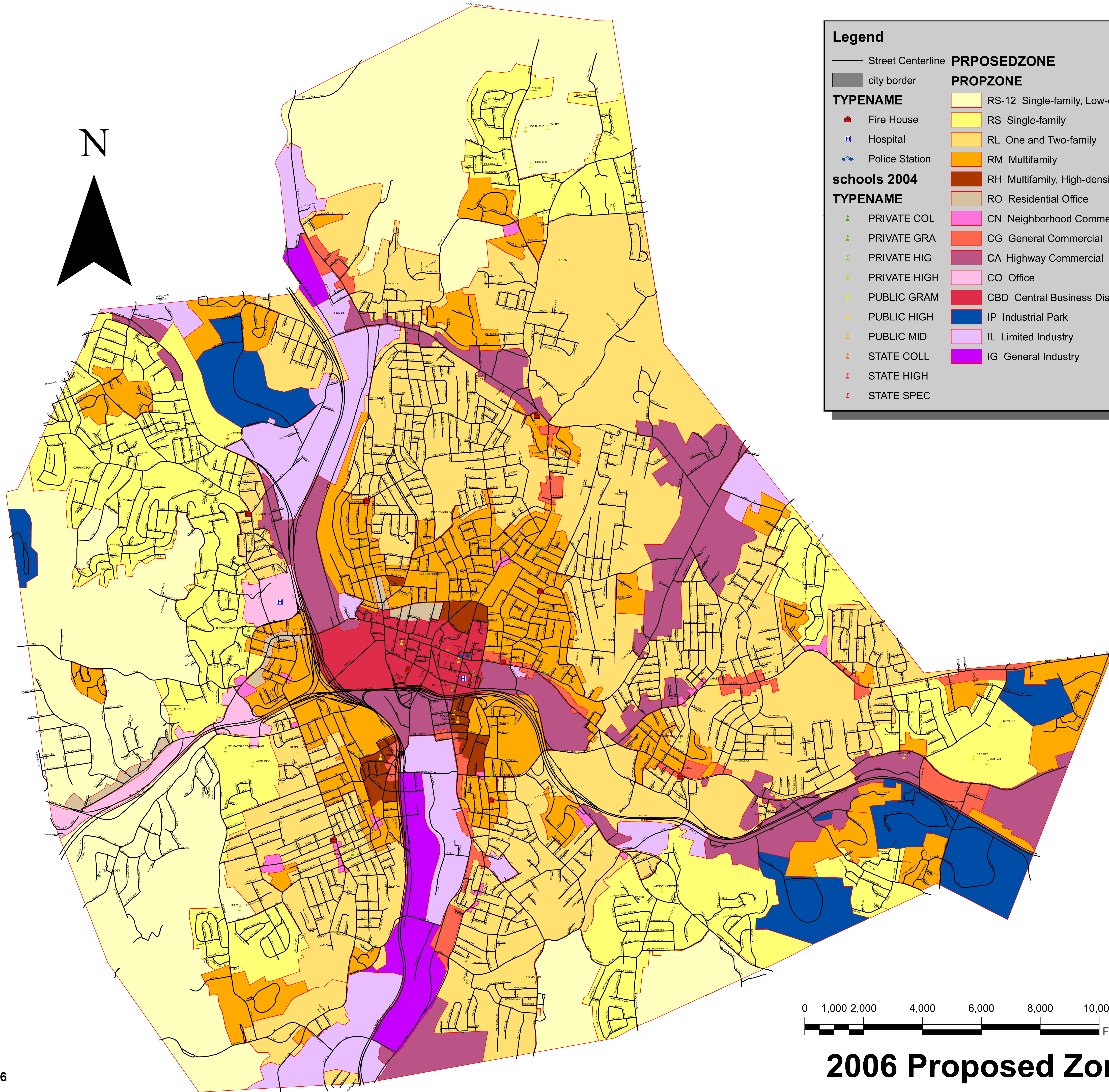
Waterbury, CT 06702

26 Kendrick Avenue

City of Waterbury, CT Department of Public Works



11-06-2006



**Legend**

— Street Centerline  
city border

**TYPENAME**

- Fire House
- Hospital
- Police Station

**schools 2004**

**TYPENAME**

- PRIVATE COL
- PRIVATE GRA
- PRIVATE HIG
- PRIVATE HIGH
- PUBLIC GRAM
- PUBLIC HIGH
- PUBLIC MID
- STATE COLL
- STATE HIGH
- STATE SPEC

**PROPOSEDZONE**

**PROPZONE**

- RS-12 Single-family, Low-density
- RS Single-family
- RL One and Two-family
- RM Multifamily
- RH Multifamily, High-density
- RO Residential Office
- CN Neighborhood Commercial
- CG General Commercial
- CA Highway Commercial
- CO Office
- CBD Central Business District
- IP Industrial Park
- IL Limited Industry
- IG General Industry

## 2006 Proposed Zoning

# Geographic Information Systems Division