

ZONING MAP

CITY OF WATERBURY

ZONING COMMISSION

ADOPTED ON:
APRIL 27, 2011
WITH REVISIONS TO:
APRIL 27, 2011



ZONING DISTRICTS

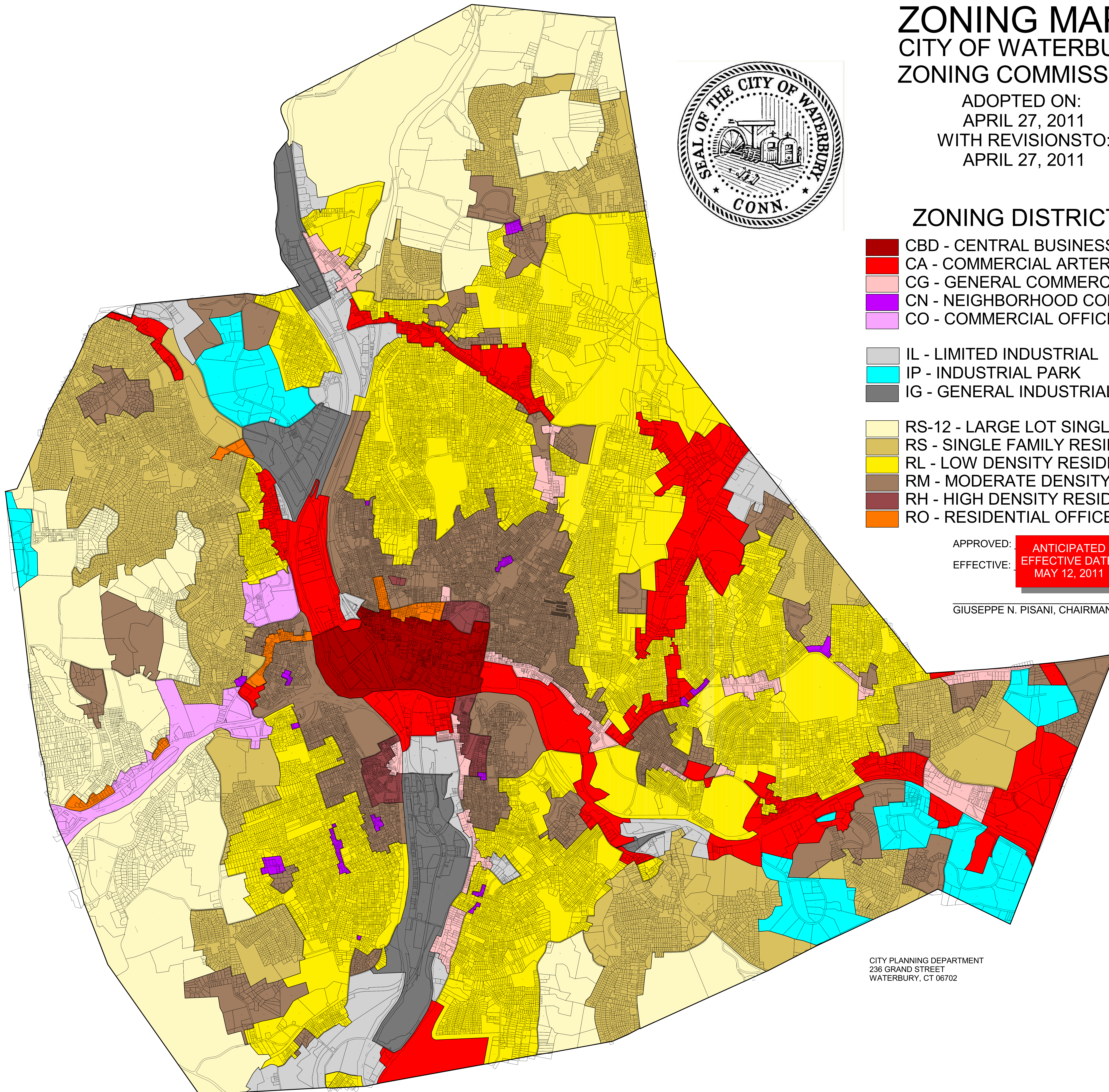
- CBD - CENTRAL BUSINESS DISTRICT
- CA - COMMERCIAL ARTERIAL
- CG - GENERAL COMMERCIAL
- CN - NEIGHBORHOOD COMMERCIAL
- CO - COMMERCIAL OFFICE

- IL - LIMITED INDUSTRIAL
- IP - INDUSTRIAL PARK
- IG - GENERAL INDUSTRIAL

- RS-12 - LARGE LOT SINGLE FAMILY RESIDENTIAL
- RS - SINGLE FAMILY RESIDENTIAL
- RL - LOW DENSITY RESIDENTIAL
- RM - MODERATE DENSITY RESIDENTIAL
- RH - HIGH DENSITY RESIDENTIAL
- RO - RESIDENTIAL OFFICE

APPROVED: ANTICIPATED
EFFECTIVE: EFFECTIVE DATE:
MAY 12, 2011

GIUSEPPE N. PISANI, CHAIRMAN



CITY PLANNING DEPARTMENT
236 GRAND STREET
WATERBURY, CT 06702